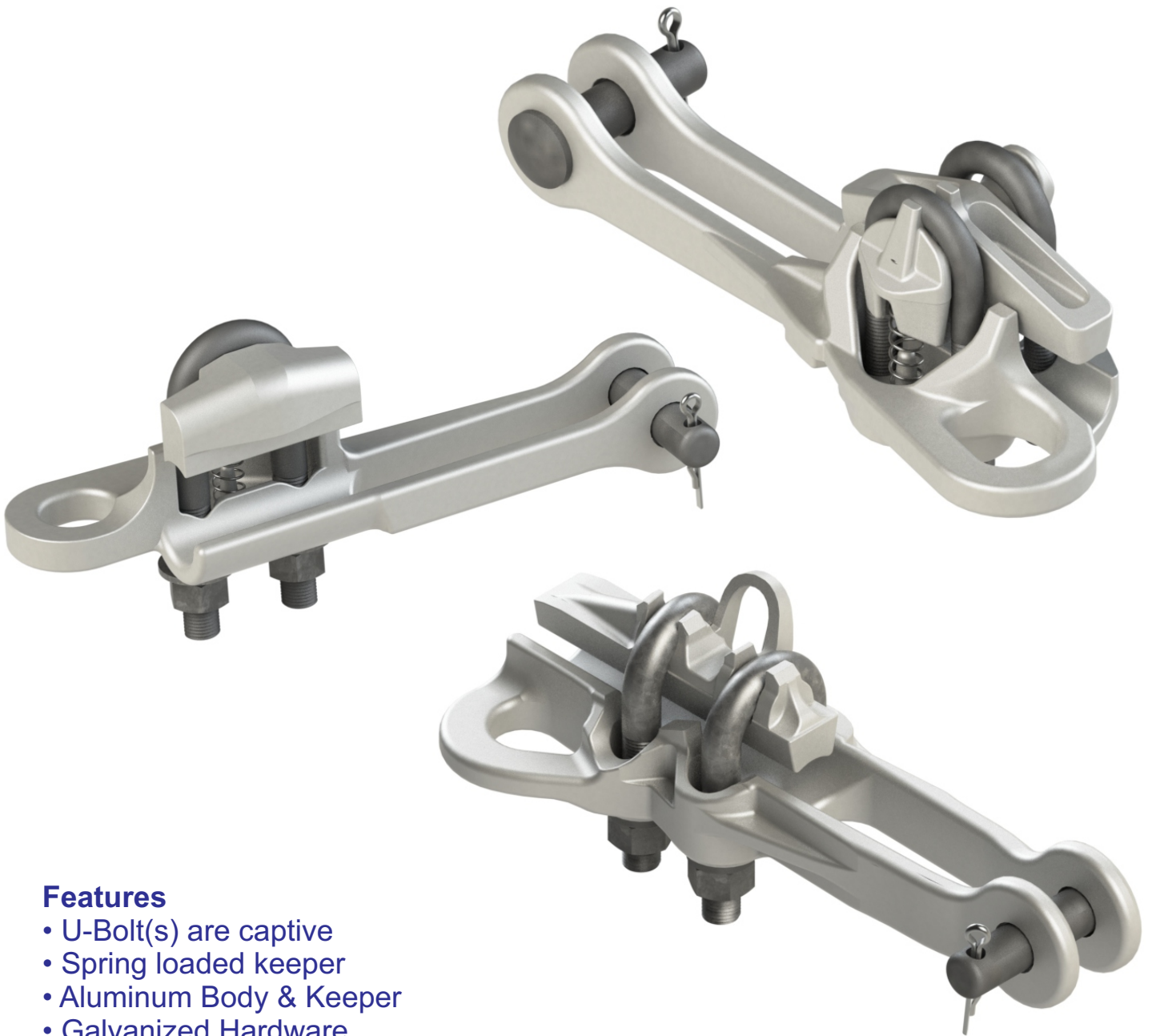




ALUMA-FORM®

# Dead End Clamps

The Aluma-Form DES clamp product line is for use in the distribution and light transmission construction. The DES clamps are designed to function with aluminum, ACSR or aluminum alloy conductors. These clamps have high holding power and large range taking ability.



## Features

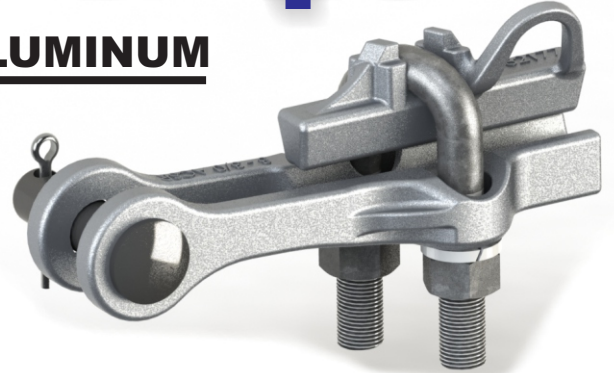
- U-Bolt(s) are captive
- Spring loaded keeper
- Aluminum Body & Keeper
- Galvanized Hardware



ALUMA-FORM®

# Dead End Clamps

## **BOLTED, STRAIGHT LINE CLAMP - ALUMINUM** **Feed Through Style**



**Material(s):**

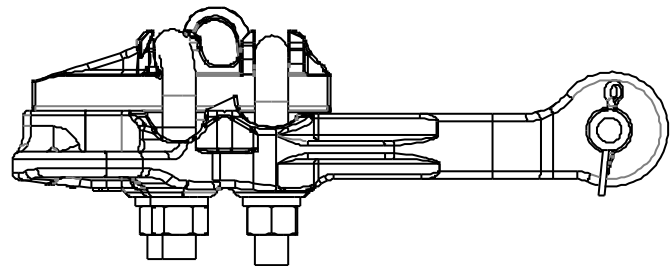
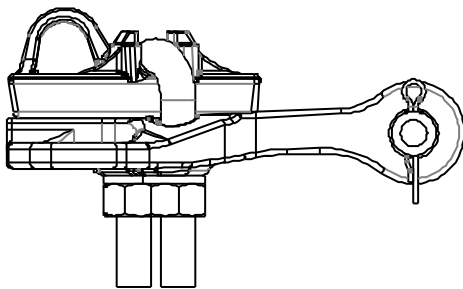
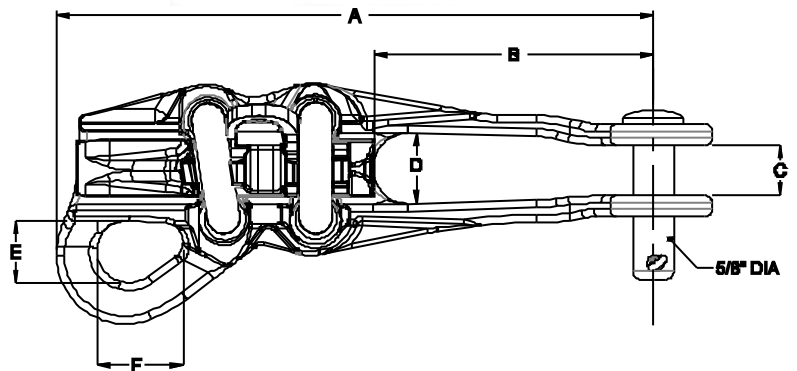
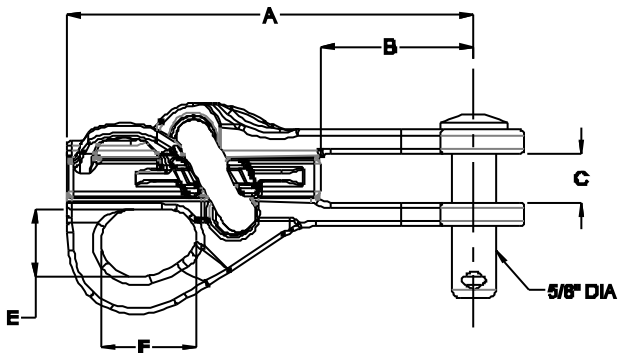
Body: 356-T6 Aluminum

Keeper: 356-T6 Aluminum

Hardware: U-Bolts, Washer, & Hex Nut - galvanized steel

5/8" Clevis Pin: Galvanized Steel

Cotter Pin: Stainless Steel



**DES-ASD-1**

**DES-ASD-45**

Catalog Name	Conductor Range			Ultimate Strength		WEIGHT (LBS)	DIM A	DIM B	DIM C	DIM D	DIM E	DIM F
	Inches	ACSR	Aluminum	Body (lbs)	Eye (lbs)							
DES-ASD-1-N	.150-.470	8 - 2/0	6 - 3/0	7000	6000	1.21	5.75	2.25	0.7	0.75	1	1.375
DES-ASD-1-N-M	.150-.470	8 - 2/0	6 - 3/0	7000	6000	2.49	5.75	2.25	0.7	0.75	1	1.375
DES-ASD-1-N-TP	.150-.470	8 - 2/0	6 - 3/0	7000	6000	1.21	5.75	2.25	0.7	0.75	1	1.375
DES-ASD-45-N	.520-.900	4/0 - 477	4/0 - 600	10000	10000	2.41	8.75	4.25	0.75	1	1.125	1.375
DES-ASD-45-N-TP	.520-.900	4/0 - 477	4/0 - 600	10000	10000	2.41	8.75	4.25	0.75	1	1.125	1.375

-TP is for Tin Plated

-M is for Marine Grade, 316 Stainless Steel



ALUMA-FORM®

# Dead End Clamps

## BOLTED, STRAIGHT LINE CLAMP - ALUMINUM

### Side Opening Style

**Material(s):**

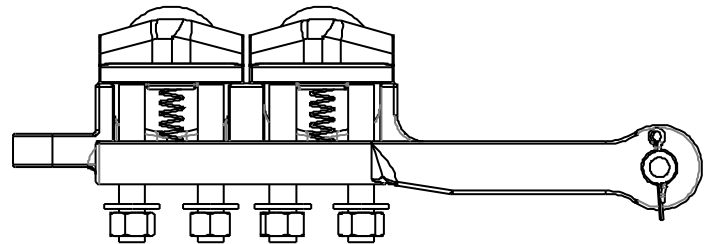
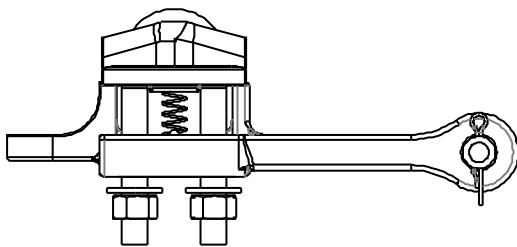
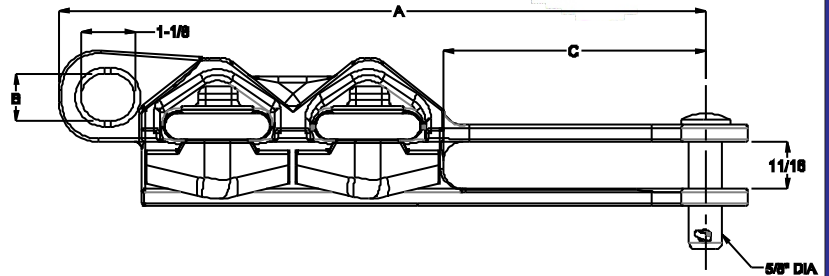
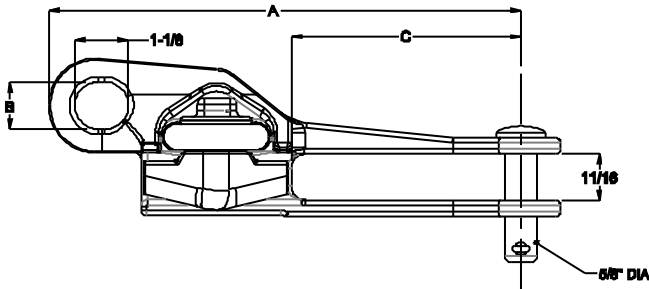
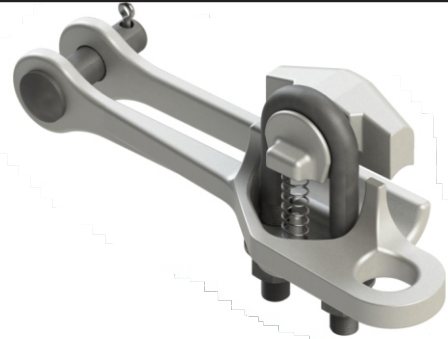
Body: 356-T6 Aluminum

Keeper: 356-T6 Aluminum

Hardware: U-Bolts, Washer, & Hex Nut - galvanized steel

5/8" Clevis Pin: Galvanized Steel

Cotter Pin: Stainless Steel



Catalog Name	Conductor Range			Ultimate Strength		Dimensions			Weight
	Inches	ACSR	Aluminum	Body (lbs)	Eye (lbs)	"A"	"B"	"C"	
DES-ASO-398-1-N	.198-.447	6-2/0	4-3/0	6000	6000	7.75	1	3.5	1.31
DES-ASO-398-1-N-TP	.198-.447	6-2/0	4-3/0	6000	6000	7.75	1	3.5	1.31
DES-ASO-570-1-N	.190-.570	6-4/0	6-4/0	8000	8000	9.75	1	5.13	1.68
DES-ASO-684-1-N	.250-684	4-336.4	2-350	8000	8000	9.13	1	4.25	1.72
DES-ASO-684-1-N-M	.250-684	4-336.4	2-350	8000	8000	9.13	1	4.25	3.29
DES-ASO-684-1-N-TP	.250-684	4-336.4	2-350	8000	8000	9.13	1	4.25	1.72
DES-ASO-684-2-N	.250-684	4-336.4	2-350	8000	8000	9.13	1	4.25	1.72
DES-ASO-858-1-N	.250-.888	4-556.5	2-556.5	12000	9000	13.5	1	5	4
DES-ASO-858-2-N	.250-.888	4-556.5	2-556.5	12000	9000	13.5	1	5	4
DES-ASO-858-2-N-TP	.250-.888	4-556.5	2-556.5	12000	9000	13.5	1	5	4

-TP is for Tin Plated

-M is for Marine Grade, 316 Stainless Steel



ALUMA-FORM®

# Dead End Clamps

## BOLTED, STRAIGHT LINE CLAMP - ALUMINUM

### Heavy Duty Side Opening Style

**Material(s):**

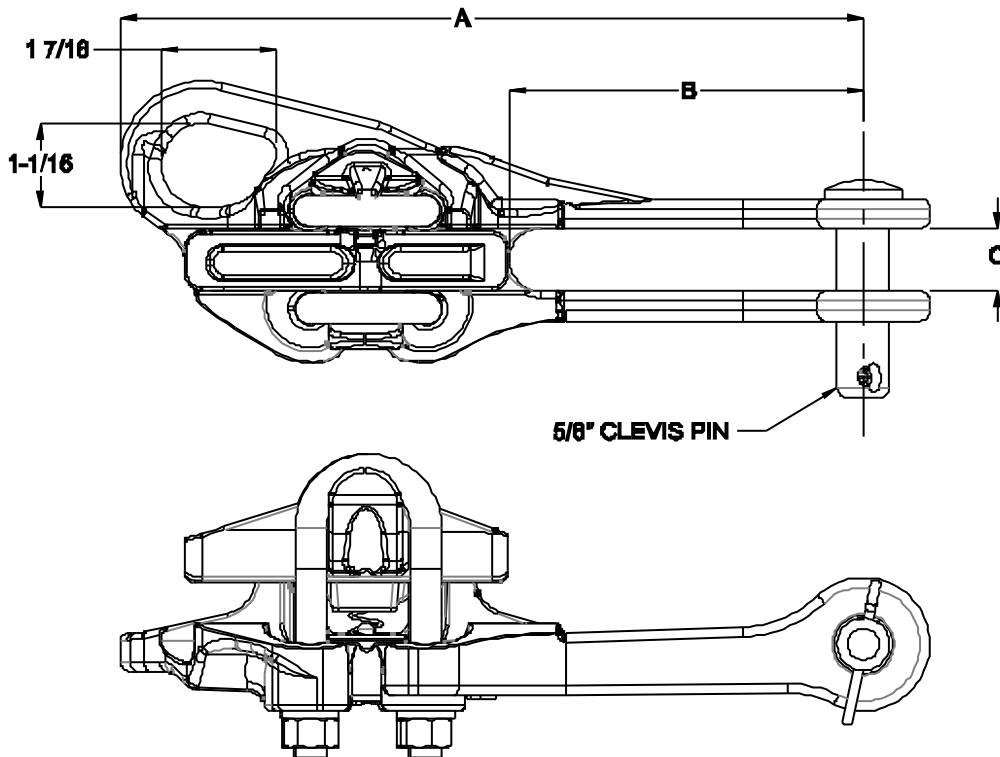
Body: 356-T6 Aluminum

Keeper: 356-T6 Aluminum

Hardware: U-Bolts, Washer, & Hex Nut - galvanized steel

5/8" Clevis Pin: Galvanized Steel

Cotter Pin: Stainless Steel



Catalog Name	Conductor Range			Ultimate Strength		Dimensions			Weight
	Inches	ACSR	Aluminum	Body (lbs)	Eye (lbs)	"A"	"B"	"C"	
DES-HDSO-47	.190-.470	8 - 2/0	4 - 3/0	7000	4000	8.5	4.25	0.75	1.57
DES-HDSO-47-TP	.190-.470	8 - 2/0	4 - 3/0	7000	4000	8.5	4.25	0.75	1.57
DES-HDSO-57	.250-570	4 - 4/0	2 - 4/0	8000	5000	8.88	4.25	0.75	1.78
DES-HDSO-57-TP	.250-570	4 - 4/0	2 - 4/0	8000	5000	8.88	4.25	0.75	1.78
DES-HDSO-82	.250-.820	2-477	1-477	9000	6000	10.5	4.88	0.88	3.08
DES-HDSO-88	.250-.880	4-556.5	2-556.5	10000	6000	10.938	4.84	1	3.35
DES-HDSO-88L-6	.250-.879	4-556.5	2-556.5	10000	6000	10.75	6	1	3.35
DES-HDSO-116	.680-1.16	336.4-954	397.5-1000	12000	8000	14.437	7	1.256	3.82

--TP is for Tin Plated

# Quadrant Clamps



DES-DA-10-N



DES-DA-15-N



DES-DA-20-N



DES-DA-22-N



DES-DA-30-N



DES-DA-40-N

Part Number	ACSR Range	Ultimate Body Strength (lbs)	U-Bolt Size	U-Bolt No.
DES-DA-10-N	6 - 3/0	8,000	3/8	1
DES-DA-15-N	6 - 3/0	8,000	1/2	2
DES-DA-20-N	4 - 266 (18/1)	12,000	1/2	2
DES-DA-22-N	4 - 397 (18/1)	15,000	1/2	2
DES-DA-30-N	2/0 - 556 (18/1)	15,000	1/2	2
DES-DA-40-N	3/0 - 954 (54/7)	20,000	1/2	2

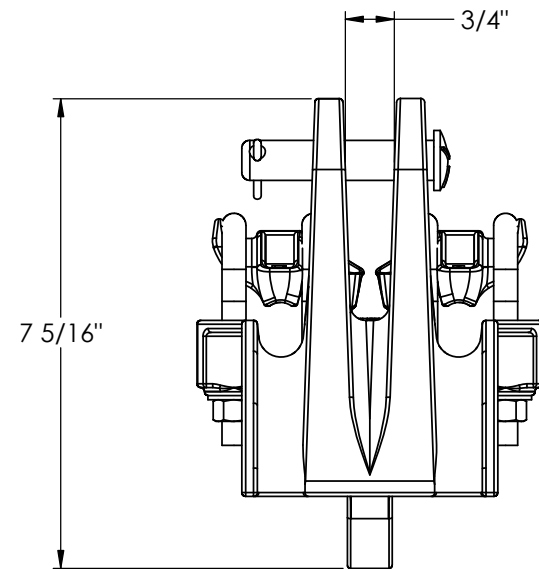
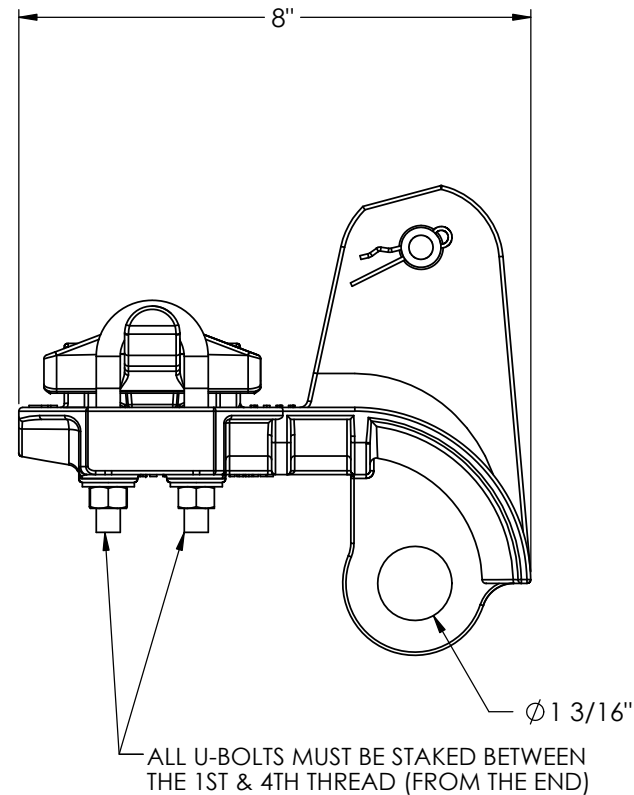
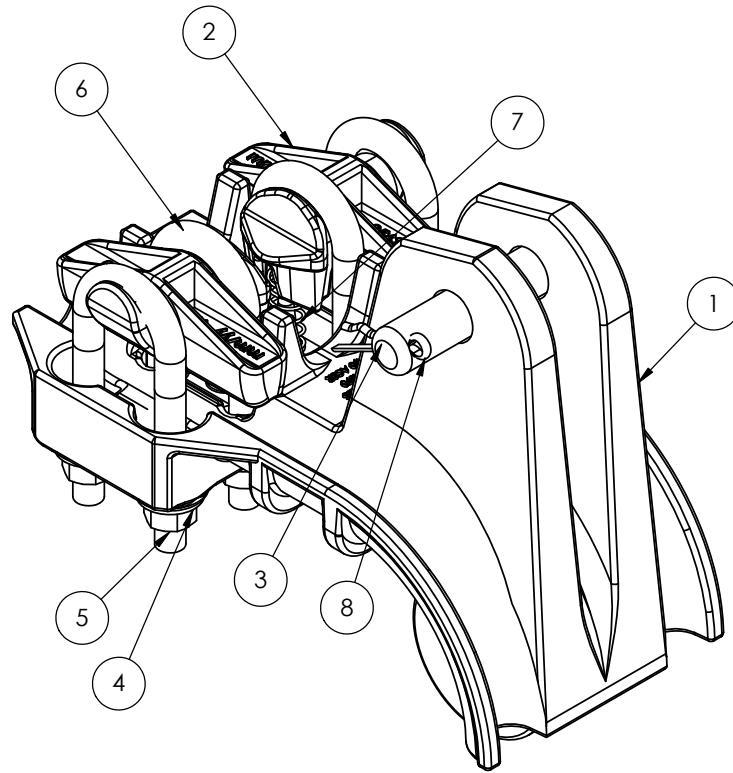
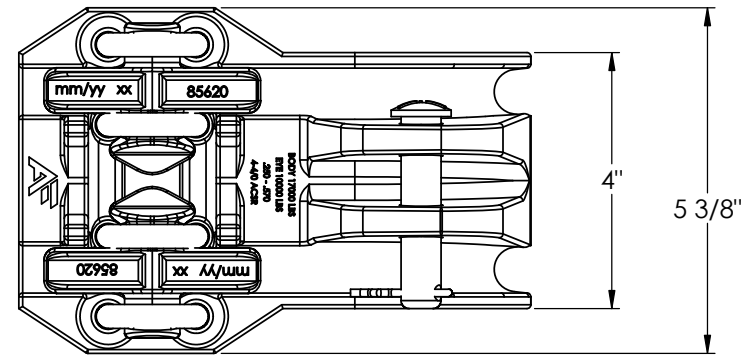
## Material:

Body and Keeper - High Strength Aluminum Alloy

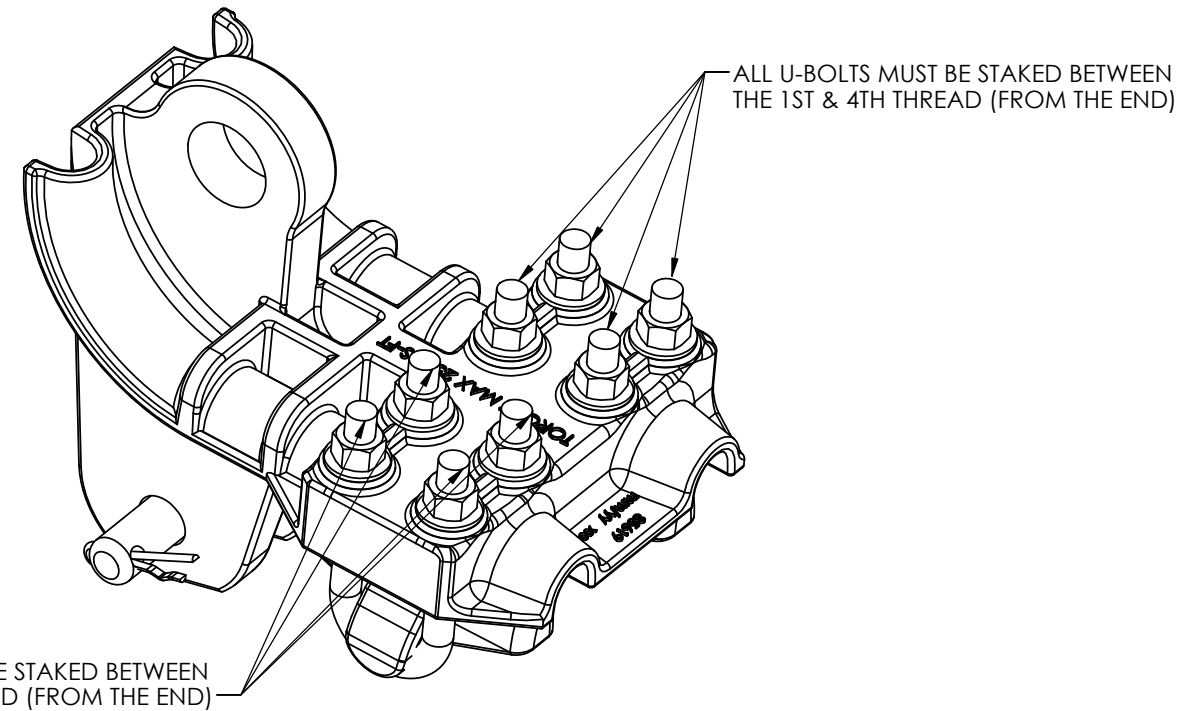
Hardware - Gavanized Alloy Steel

Cotter Pin - Stainless Steel

DUPLICATION, DISTRIBUTION OR ALTERATION OF THIS DOCUMENT BY ANY MEANS, IN WHOLE OR IN PART, IS STRICTLY FORBIDDEN. ALL INFORMATION HEREIN DISCLOSED, WHETHER PATENTABLE OR OTHERWISE, IS THE CONFIDENTIAL, PROPRIETARY AND INTELLECTUAL PROPERTY OF ALUMA-FORM, INC. ANY USE OR PUBLICATION OF THIS DOCUMENT OR CONTAINED INFORMATION, WITHOUT FIRST OBTAINING EXPLICIT WRITTEN AUTHORIZATION FROM ALUMA-FORM, INC., IS ABSOLUTELY FORBIDDEN.



ITEM NO.	PART NUMBER	DESCRIPTION	QTY.
1	85619	BODY, DUAL CABLE, QUADRANT	1
2	85620	KEEPER, SIZE T2	2
3	71176	5/8" x 3" GRADE 5 CLEVIS PIN	1
4	30546	3/8" NARROW FLATWASHER - HDG	8
5	30045	NUT, HEX, 3/8" (.017 OS)	8
6	30435	3/8" x 1" x 3-1/4" U-BOLT	4
7	30544	SPRING	2
8	21113	1/8" x 9/16" HUMPBACK COTTER PIN	1



- NOTES:
- ALL DIMENSIONS REFERENCE ONLY
  - MATERIAL:
    - BODY AND KEEPER - HIGH STRENGTH ALUMINUM ALLOY
    - HARDWARE - HOT DIP GALVANIZED STEEL
  - GALVANIZING PER ASTM A153
  - WIRE RANGE: #4-4/0 ACSR (.250"-.570")
  - BODY STRENGTH 17K LBS
  - PULLING EYE STRENGTH 10K LBS
  - ALL UBOLTS SHALL BE STAKED FOR RESTRICTING NUT REMOVAL

UNLESS OTHERWISE SPECIFIED, STANDARD ALUMA-FORM, INC. MANUFACTURING TOLERANCES APPLY

CHANGE / REVISION DESCRIPTION	ADDED NOTES ON UBOLT STAKING	JOB NUMBER	ALUMA-FORM, Inc.			SCALE	1:4	DESCRIPTION	DES-AQD-T2-57				
			3625 OLD GETWELL ROAD MEMPHIS, TN 38118-6072 U.S.A.			PROJECT CODE		MATERIAL					
						WEIGHT	5.08	SECTION					
			RDP-	6732	19SEPT2019	RDP	7945	12JUL2022					
			DRAWN BY	RELEASE E.A.	RELEASE DATE	REVISED BY	REVISED E. A.	REVISED DATE	REVIEWED	APPROVED			
											55943	C	
											DRAWING NUMBER	REVISION	

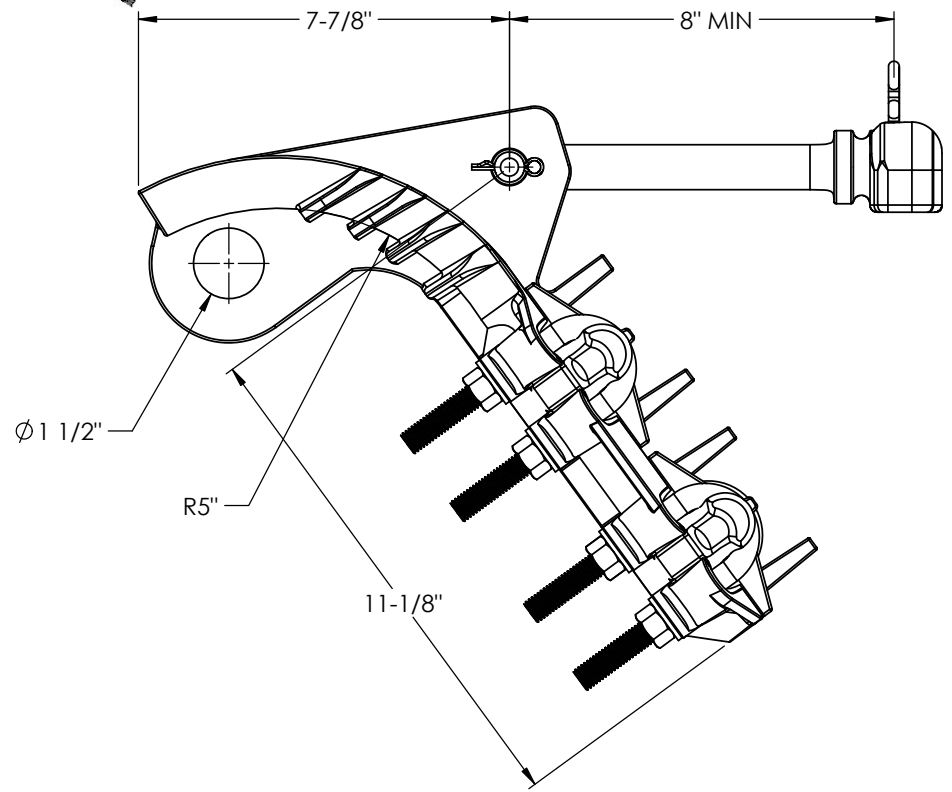
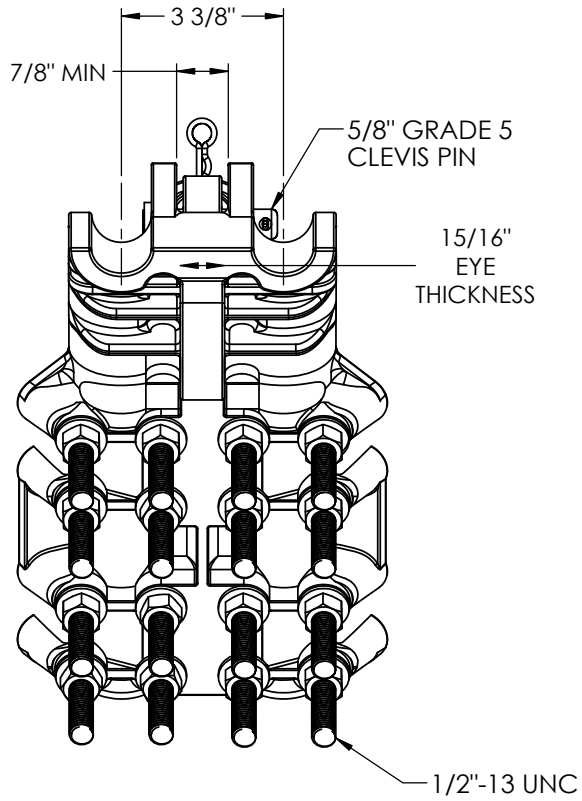
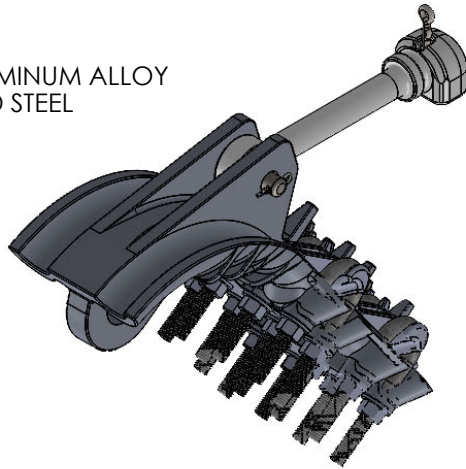
DUPLICATION, DISTRIBUTION OR ALTERATION OF THIS DOCUMENT BY ANY MEANS, IN WHOLE OR IN PART, IS STRICTLY FORBIDDEN. ALL INFORMATION HEREIN DISCLOSED, WHETHER PATENTABLE OR OTHERWISE, IS THE CONFIDENTIAL, PROPRIETARY AND INTELLECTUAL PROPERTY OF ALUMA-FORM, INC. ANY USE OR PUBLICATION OF THIS DOCUMENT OR CONTAINED INFORMATION, WITHOUT FIRST OBTAINING EXPLICIT WRITTEN AUTHORIZATION FROM ALUMA-FORM, INC., IS ABSOLUTELY FORBIDDEN.

**ALUMA-FORM, Inc.**

3625 OLD GETWELL ROAD  
 MEMPHIS, TN 38118-4072 U.S.A.  
 TEL (901) 362-0100 FAX (901) 375-3383

**NOTES:**

1. MATERIAL:
  1. BODY & KEEPERS: HIGH STRENGTH ALUMINUM ALLOY
  2. SOCKET FITTING: GALVANIZED FORGED STEEL
  3. HARDWARE: GALVANIZED STEEL
  4. COTTER PINS: STAINLESS STEEL
2. ALL GALVANIZING PER ASTM A153
3. SAG EYE STRENGTH: 18,000 LBS
4. BODY STRENGTH: 30,000 LBS
5. CABLE RANGE: .502"-.990"  
3/0-636 ACSR
6. TORQUE U-BOLTS 40-45 LBS\*FT
7. ALL DIMENSIONS FOR REFERENCE ONLY



		<b>541225</b> DRAWING NUMBER	- REVISION
ITEM NO.	PART NUMBER	DESCRIPTION	QTY.
1	400453	ASSY, DES-AQDH-T2-94-HLSE	1

UNLESS OTHERWISE SPECIFIED, STANDARD ALUMA-FORM, INC. MANUFACTURING TOLERANCES APPLY

<b>CHANGE / REVISION DESCRIPTION</b>		<b>RDP</b>	<b>1:8</b>	<b>DESCRIPTION</b>	<b>DES-AQDH-T2-94-HLSE</b>		
		DRAWN BY <b>7782</b>	SCALE <b>HDB</b>	<b>MATERIAL</b>	SEE NOTES		
		RELEASE E.A. <b>01MAR2022</b>	PROJECT CODE <b>17.59</b>	<b>JOB NUMBER</b>	<b>SECTION</b>	<b>541225</b>	
		RELEASE DATE	WEIGHT				
		REVISED BY	REVISED E.A.	REVISED DATE	REVIEWED	APPROVED	DRAWING NUMBER
							REVISION