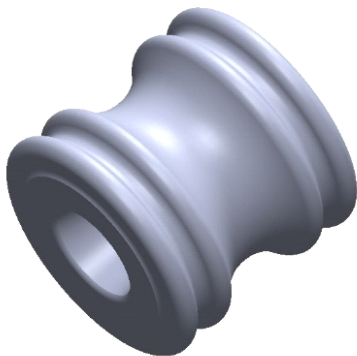




ALUMA-FORM®

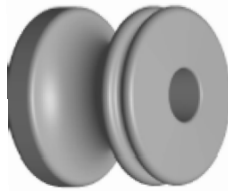
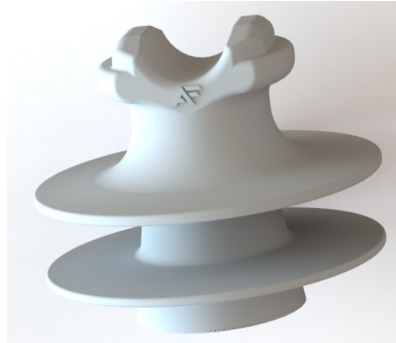
HDPE Insulator Catalog





ALUMA-FORM®

High Temperature Insulators



Aluma-Form high temperature insulators are manufactured with a special high-density polyethylene designed for use in systems with continuous conductor temperatures up to 200° C.

Features and Benefits

- Continuous operation up to 200° C
- Meets or Exceeds ANSI and RUS standards
- UV and Ozone Resistant
- Impact Resistant
- 100% X-Ray to ensure no voids
- Made in the USA

Available for all HDPE insulators

- Add "-HT" suffix to any standard catalog number



Pin Top Insulators

ALUMA-FORM®

Features

Meets or Exceeds ANSI and RUS Test Standards

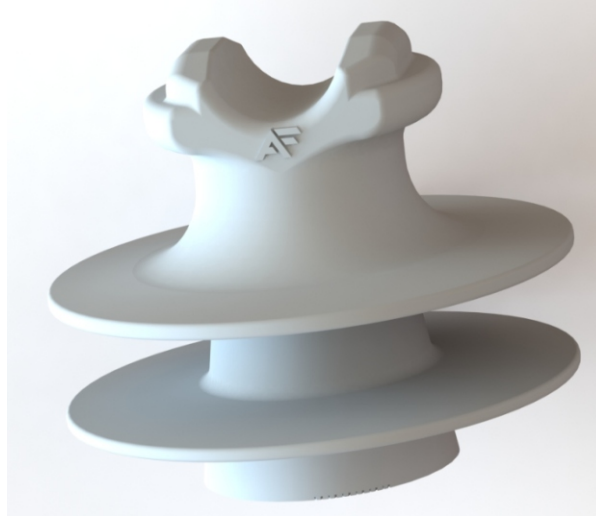
ANSI C29.5, C29.6, C29.13

High Density Polyethylene UV
and Ozone Resistant High Heat
Resistant

Impact Resistant

1" and 1-3/8" Threads

100% X-Ray to Ensure No Voids



Markings

AF Logo

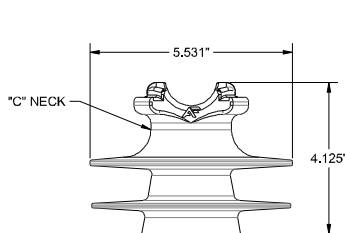
Date Code

ANSI Class

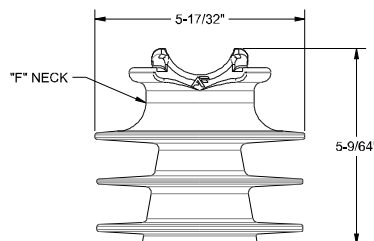
Part Number

CAT #	ANSI CLASS	TYPICAL APPLICATION (kV)	PIN THREAD (IN)	LEAKAGE DISTANCE IN (ANSI)	CANTILEVER STRENGTH lbs (ANSI)	60 Hz DRY FLASHOVER kV (ANSI)	60 Hz WET FLASHOVER kV (ANSI)	IMPULSE FLASHOVER POS. kV (ANSI)	IMPULSE FLASHOVER NEG. kV (ANSI)	LOW FREQUENCY PUNCTURE kV (ANSI)
INS-15-PC-1	55-3	15	1	10.5 (7)	>3500 (2500)	74 (55)	50 (30)	140 (90)	135 (110)	170 (90)
INS-15-PF-1	55-4	15	1	13 (12)	>3500 (3000)	82 (65)	55 (35)	140 (105)	160 (130)	180 (95)
INS-25-PF-1	55-5	25	1	13.5 (12)	>3500 (3000)	84 (80)	61 (45)	150 (130)	173 (150)	190 (115)
INS-25-PF-2	55-5*	25	1-3/8	13.5 (12)	>3500 (3000)	84 (80)	61 (45)	150 (130)	173 (150)	190 (115)
INS-25-PJ-1	55-6	25	1	15.5 (15)	>3500 (3000)	104 (100)	74 (50)	165 (150)	200 (170)	201 (135)
INS-25-PJ-2	56-1	25	1-3/8	15.5 (13)	>3500 (2500)	104 (95)	74 (60)	165 (150)	200 (190)	201 (130)
INS-35-PF-1	55-6*	35	1	22.3 (15)	>3500 (3000)	120 (100)	65 (50)	200 (150)	220 (170)	195 (135)
INS-35-PF-2	55-7*	35	1-3/8	22.3 (15)	>3500 (3000)	120 (100)	65 (50)	200 (150)	220 (170)	195 (135)
INS-35-PJ-1	55-6	35	1	20.3 (15)	>3500 (3000)	121 (100)	66 (50)	205 (150)	221 (170)	207 (135)
INS-35-PJ-2	55-7	35	1-3/8	20.3 (15)	>3500 (3000)	121 (100)	66 (50)	205 (150)	221 (170)	207 (135)

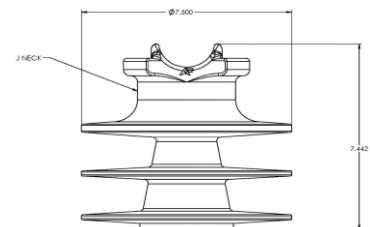
* Meets Electrical Performance



INS-15-PC-1
ANSI 55-3
1" PIN



INS-25-PF-1
ANSI 55-5
1" PIN



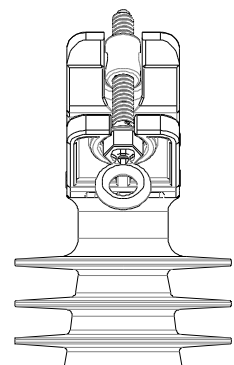
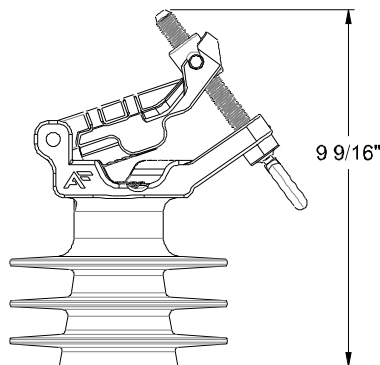
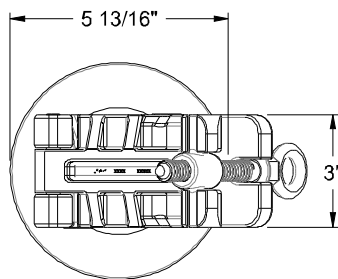
INS-35-PJ-2
ANSI 55-6
1-3/8" PIN



ALUMA-FORM®

Clamp Top Insulators

- Patented design
- Single bolt design reduces installation time and cost
- Easier installation with no bolt removal to load conductor
- No stringing tool required as conductor installs same as tie-top
- Compound angle for direct bolt access below arm
- Fulcrum clamp for highest clamping force in the industry
- GO-95 compliant
- Heat dissipating design in over-load scenarios
- Up to 30 deg. turning angle in either direction with standard pin
- Meets all ANSI requirements
- RUS approved
- Ozone and UV resistant High Density Polyethylene construction
- 100% X-ray to ensure no voids
- All insulators permanently marked AF logo, Date Code, and ANSI Class
- 1" and 1-3/8" pin threads
- Impact resistant



15 kV shown above



Clamp Top Insulators

ALUMA-FORM®

Range: .129" - .741"

Operates based on diameter so any conductor within this range will work.

The Clamp Top Pin Insulator utilizes a compound angle clamp for direct access below the arm, making it easy to install with a hotstick.

The clamping mechanism creates a fulcrum effect on the cable for up to 3:1 ratio of tightening force vs clamping force.

Clamp Top Pin Insulators are offered with two different inserts.

PEEK – Limits the cable retention force up to 450 lbs to comply with GO-95 requirements.

Ceramic – Delivers up to 1000 lbs. cable retention.

Each insert is approved for use with all types of cable including aluminum, copper, bare, and insulated.

The Clamp Top insulator is made from UV resistant and fire retardant polymers.



CAT #	ANSI CLASS	TYPICAL APPLICATION (kV)	PINHOLE DIAMETER (IN)	LEAKAGE DISTANCE in. (ANSI)	CANTILEVER STRENGTH LBS (ANSI)	60 Hz DRY FLASHOVER kV (ANSI)	60 Hz WET FLASHOVER kV (ANSI)	IMPULSE FLASHOVER POS. kV (ANSI)	IMPULSE FLASHOVER NEG. Kv (ANSI)	LOW FREQUENCY PUNCTURE kV (ANSI)
INS-15-PK-1	55-3 / 55-4	15	1	16.3 (9)	>3500 (2500)	80 (65)	53 (35)	140 (105)	160 (130)	180 (95)
INS-15-PK-1-P	55-3 / 55-4	15	1	16.3 (9)	>3500 (3000)	80 (65)	53 (35)	140 (105)	160 (130)	180 (95)
INS-15-PKW-1	55-3 / 55-4	25	1	16.3 (9)	>3500 (3000)	80 (65)	53 (35)	140 (105)	160 (130)	180 (95)
INS-15-PKW-1-P	55-3 / 55-4	25	1	16.3 (9)	>3500 (3000)	80 (65)	53 (35)	140 (105)	160 (130)	180 (95)
INS-25-PK-1	55-5	25	1	16.5 (12)	>3500 (3000)	82 (80)	55 (45)	142 (130)	162 (150)	189 (115)
INS-25-PK-1-P	55-5	25	1	16.5 (12)	>3500 (3000)	82 (80)	55 (45)	142 (130)	162 (150)	189 (115)
INS-25-PK-2	55-5	25	1-3/8	16.5 (12)	>3500 (3000)	82 (80)	55 (45)	142 (130)	162 (150)	189 (115)
INS-25-PK-2-P	55-5	25	1-3/8	16.5 (12)	>3500 (3000)	82 (80)	55 (45)	142 (130)	162 (150)	189 (115)
INS-35-PK-1	55-6	35	1	22.0 (15)	>3500 (3000)	121 (100)	72 (50)	205 (150)	225 (170)	210 (135)
INS-35-PK-1-P	55-6	35	1	22.0 (15)	>3500 (3000)	121 (100)	72 (50)	205 (150)	225 (170)	210 (135)
INS-35-PK-2	55-7	35	1-3/8	22.0 (15)	>3500 (3000)	121 (100)	72 (50)	205 (150)	225 (170)	210 (135)
INS-35-PK-2-P	55-7	35	1-3/8	22.0 (15)	>3500 (3000)	121 (100)	72 (50)	205 (150)	225 (170)	210 (135)



Clamp Top Insulators

ALUMA-FORM®

Range: .250" - 1.340"

Operates based on diameter so any conductor within this range will work.

The Clamp Top Pin Insulator utilizes a compound angle clamp for direct access below the arm, making it easy to install with a hotstick.

The clamping mechanism creates a fulcrum effect on the cable for up to 3:1 ratio of tightening force vs clamping force.

Clamp Top Pin Insulators are offered with two different inserts.

PEEK – Limits the cable retention force up to 450 lbs to comply with GO-95 requirements.

Ceramic – Delivers up to 1000 lbs. cable retention.

Each insert is approved for use with all types of cable including aluminum, copper, bare, and insulated.

The Clamp Top insulator is made from UV resistant and fire retardant polymers.

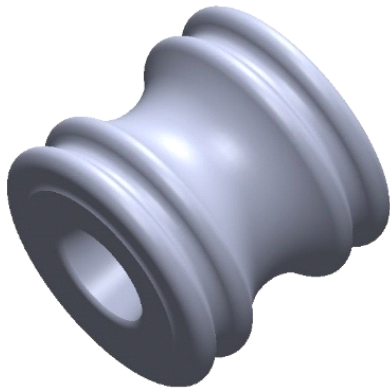


CAT #	ANSI CLASS	TYPICAL APPLICATION (kV)	PINHOLE DIAMETER (IN)	LEAKAGE DISTANCE in. (ANSI)	CANTILEVER STRENGTH LBS (ANSI)	60 Hz DRY FLASHOVER kV (ANSI)	60 Hz WET FLASHOVER kV (ANSI)	IMPULSE FLASHOVER POS. kV (ANSI)	IMPULSE FLASHOVER NEG. Kv (ANSI)	LOW FREQUENCY PUNCTURE kV (ANSI)
INS-15-P2K-1	55-3 / 55-4	15	1	16.3 (9)	>3500 (2500)	80 (65)	53 (35)	140 (105)	160 (130)	180 (95)
INS-15-P2K-1-P	55-3 / 55-4	15	1	16.3 (9)	>3500 (3000)	80 (65)	53 (35)	140 (105)	160 (130)	180 (95)
INS-15-P2KW-1	55-3 / 55-4	25	1	16.3 (9)	>3500 (3000)	80 (65)	53 (35)	140 (105)	160 (130)	180 (95)
INS-15-P2KW-1-P	55-3 / 55-4	25	1	16.3 (9)	>3500 (3000)	80 (65)	53 (35)	140 (105)	160 (130)	180 (95)
INS-25-P2K-1	55-5	25	1	16.5 (12)	>3500 (3000)	82 (80)	55 (45)	142 (130)	162 (150)	189 (115)
INS-25-P2K-1-P	55-5	25	1	16.5 (12)	>3500 (3000)	82 (80)	55 (45)	142 (130)	162 (150)	189 (115)
INS-25-P2K-2	55-5	25	1-3/8	16.5 (12)	>3500 (3000)	82 (80)	55 (45)	142 (130)	162 (150)	189 (115)
INS-25-P2K-2-P	55-5	25	1-3/8	16.5 (12)	>3500 (3000)	82 (80)	55 (45)	142 (130)	162 (150)	189 (115)
INS-35-P2K-1	55-6	35	1	22.0 (15)	>3500 (3000)	121 (100)	72 (50)	205 (150)	225 (170)	210 (135)
INS-35-P2K-1-P	55-6	35	1	22.0 (15)	>3500 (3000)	121 (100)	72 (50)	205 (150)	225 (170)	210 (135)
INS-35-P2K-2	55-7	35	1-3/8	22.0 (15)	>3500 (3000)	121 (100)	72 (50)	205 (150)	225 (170)	210 (135)
INS-35-P2K-2-P	55-7	35	1-3/8	22.0 (15)	>3500 (3000)	121 (100)	72 (50)	205 (150)	225 (170)	210 (135)

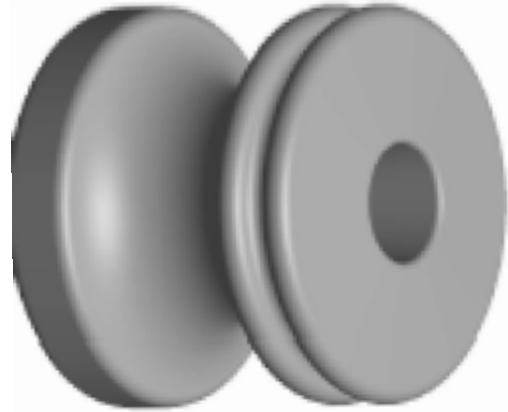


Spool Insulators

ALUMA-FORM®



INS-53-1



INS-53-2

Catalog Number	ANSI Class	Material Description
INS-53-1	53-1	SPOOL INSULATOR 2-1/4"
INS-53-2	53-2	SPOOL INSULATOR 3"

- Meets ANSI C29.3 Class 53-2
- High Density Polymer – UV and Flame Resistant
- Available in High Temperature
- Fits on 5/8" Bolt
- 100% X-ray to ensure no voids
- Available in Black, Brown and White

